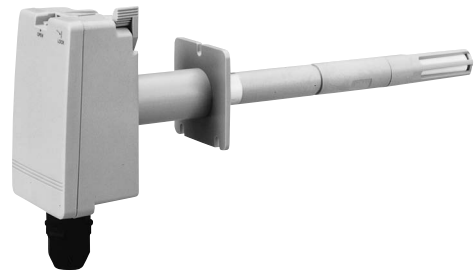


Duct Dewpoint Temperature Sensor | HTY79 Series

The duct dewpoint temperature sensors in the HTY79 series are highly accurate and highly reliable sensors that use a combination of a Pt100 platinum resistance temperature detector (JIS C1604 class A) as the dew-point temperature sensing element and a polymer capacitive humidity sensing element (our internally developed FP3) as the humidity sensing element. With their wide measurement range and excellent stability, they can be used in a variety of industrial applications as well as building air conditioning, outdoor air measurement, and other applications.



Specifications

Measurement range	Temperature: -20 to +60 °C Dew-point temperature: -40 to +60 °CDP
Detection accuracy	Temperature: ±0.3 °C (at -20 to +60 °C) Dew-point temperature: ±1 °CDP (30 to 90% RH at 25 °C) ±2.5 °CDP (30 to 90% RH at -5 to +60 °C)
Sensing elements	Temperature: Pt100: platinum thin-film resistance temperature detector (JIS C1604 class A) Humidity: polymer thin film
Output signal	Temperature: 100 Ω/0 °C Dew-point temperature: 1 to 5 Vdc (linear against -40 to +60 °CDP) 4 to 20 mAdc (linear against -40 to +60 °CDP)
Rated power supply voltage	24 Vac 50/60 Hz, 24 Vdc
Power consumption	0.7 VA (1 to 5 V output model at 24 Vac) 600 mW (1 to 5 V output model at 24 Vdc) 1.4 VA (4 to 20 mA output model at 24 Vac) 1.2 W (4 to 20 mA output model at 24 Vdc)
Dust-proof, drip-proof	Housing: IP54
Weight	Inserted part: long approx. 250 g, short approx. 220 g

Model No. configuration

Model No.	Description
HTY7903T1P00	Temperature output (Pt100Ω) + dew-point output (1 to 5 V), inserted part: long
HTY7903T4P00	Temperature output (Pt100Ω) + dew-point output (4 to 20 mA), inserted part: long
HTY7913T1P00	Temperature output (Pt100Ω) + dew-point output (1 to 5 V), inserted part: short
HTY7913T4P00	Temperature output (Pt100Ω) + dew-point output (4 to 20 mA), inserted part: short

Optional parts (sold separately)

Name	Model No.
Mounting bracket	83157235-001
Electric wire mounting set (applicable cable outer diameter of φ11 to φ14)	83157240-004
Seal connector (applicable cable outer diameter of φ10.5 to φ14.5)	83104098-004
Sensor shield for outdoors use	DY8000A1001
Sensor mounting bracket for instrument screen (L-shape fitting)	DY3002A1005